

IFS Copperleaf Accelerate

Accelerate your path to value with
tailored enablement support



A proactive approach to IFS Copperleaf implementation

Successful implementation of your IFS Copperleaf® Asset Investment Planning (AIP) solution is a critical objective, yet it's really just the beginning of your journey of your investment in IFS Copperleaf. You need to ensure rapid adoption across your organization—and be able to quickly adapt the solution as your business needs evolve. **IFS Copperleaf Accelerate** is an advisory services program that can help you get the most value from your solution, today and into the future.

Align your strategy to the capabilities of IFS Copperleaf

IFS Copperleaf Accelerate is a flexible advisory services partnership that enables customers to mature their use of the IFS Copperleaf solution to achieve their evolving business strategy and get the most out of their investment. Accelerate offers one-on-one advisory support from the implementation and launch of your IFS Copperleaf products to value realization.

Built on our extensive industry and technology knowledge, Accelerate ensures your company implements IFS Copperleaf in line with proven best practices. A tailored Accelerate plan outlines how IFS Copperleaf technical advisory services will be leveraged to

tackle high value strategic initiatives for your organization, and continuous validation and adjustment ensures you realize maximum ROI from your investments.

Support for any stage

For new clients, Accelerate includes Launch, a tailor-made solution designed to deliver core system value within the first three months.

This approach enables customers to create investments, apply a pre-configured value framework, run optimization, and generate outputs, delivering early, tangible results while laying the foundation for deeper adoption.

By getting to an initial deployable solution quickly, organizations can start realizing value faster, and position Accelerate services as part of their recurring transformation engine.

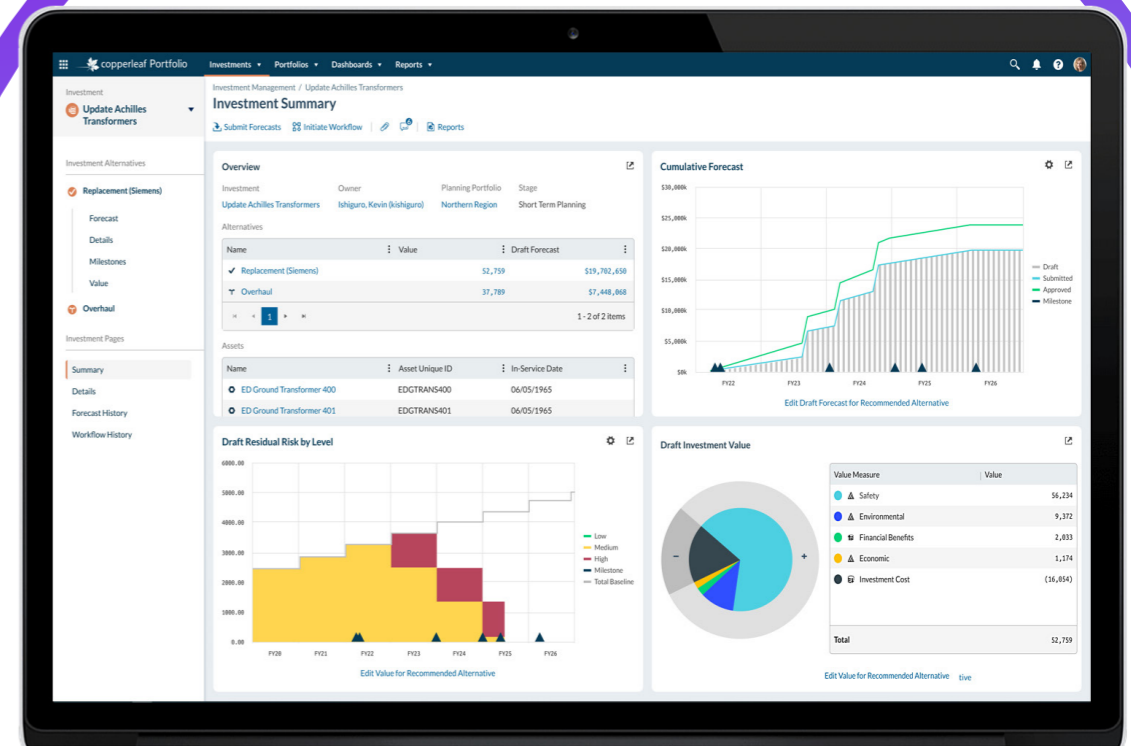
For existing clients, Accelerate continues to provide tailored guidance and expert services that evolve with your organization—helping you unlock deeper value, adapt to change, and continuously improve over time.

Achieve your business objectives faster

IFS Copperleaf Accelerate clients will benefit from a set of foundation services with four focus areas: strategic focus, solution focus, operational focus, and change focus. Additional expert services are available to further customize the support you'll receive to your specific needs and objectives.

The core components of Accelerate include:

- Digital business value assurance tracking tools
- IFS Copperleaf Customer Success Manager (CSM) to proactively manage the program
- Shared success plans with jointly agreed-upon goals
- Predefined expert best practice service offerings
- Efficient access to experts for guidance on day-to-day tasks
- Access to product training and to IFS Copperleaf intellectual property tools, industry best practices, and expert knowledge
- Committed engagement with executive sponsorship



Accelerate Value Realization

Realize maximum business value	Align expert support with your strategic goals through a collaborative success plan
Speed up time to value	Follow a structured planning approach to get it right the first time
Strengthen resilience and reduce execution risk	Align with best practices in risk mitigation and validate changes before executing
Build internal capability with best-in-class decision-making frameworks	Gain access to IFS Copperleaf intellectual property and expertise
Advance strategic objectives and track performance with confidence	Track and measure your successes in quarterly business reviews with IFS Copperleaf sponsors

Accelerate your capital strategy

Contact your IFS Copperleaf Client Success Manager to get started, and ensure every investment decision moves your organization closer to its strategic goals.

The first 25 clients to implement IFS Copperleaf Accelerate using the standard IFS Copperleaf T&Cs with no redlines will receive complimentary launch deployment valued at \$200,000 USD.

About IFS



IFS is the world's leading provider of Industrial AI and enterprise software for hardcore businesses that service, power, and protect our planet. Our technology enables businesses which manufacture goods, maintain complex assets, and manage service-focused operations to unlock the transformative power of Industrial AI™ to enhance productivity, efficiency, and sustainability.

Within our single platform, our industry specific products are innately connected to a single data model and use embedded digital innovation so that our customers can be their best when it really matters to their customers—at the Moment of Service™.

The industry expertise of our people and of our growing ecosystem, together with a commitment to deliver value at every single step, has made IFS a recognized leader and the most recommended supplier in our sector. Our global team of over 7,000 employees every day live our values of agility, trustworthiness, grit and collaboration in how we support thousands of customers.

Learn more about how our enterprise software solutions can help your business today at ifs.com.

#MomentOfService