

Build investment plans that drive capital efficiency

The chemical industry is undergoing unprecedented change. Margins are being squeezed by global competition, yet investors, regulators, and consumers are placing increasing pressure on chemical companies to invest to meet new and evolving Environmental, Social, and Governance (ESG) commitments. Organizations must strike the right balance between cost-effectively managing the current business and investing to meet future demands.

Traditional projects to improve the reliability, productivity, and safety of plants, property, and equipment—and new initiatives to reduce greenhouse gas (GHG) emissions or build climate resilience—deliver unique benefits. Being able to evaluate these benefits and compare them on equal footing is critical to making the right decisions about where to invest. The Copperleaf® Value Framework embodies an organization's unique definition of value, enabling businesses to build capital plans that balance disparate factors, such as safety, sustainability, and productivity.

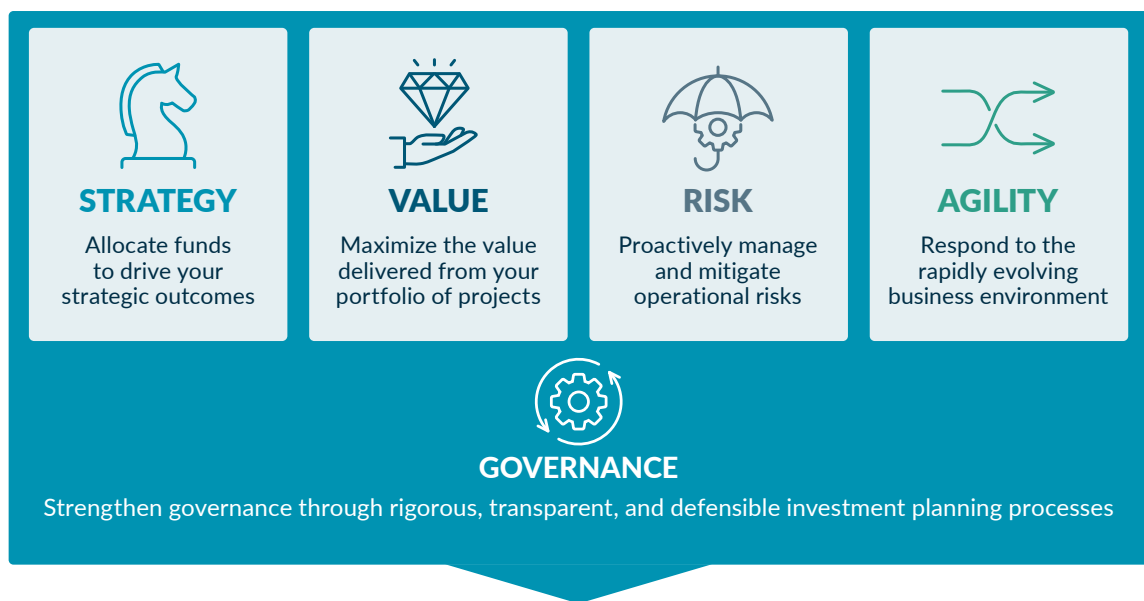
Copperleaf's decision analytics solutions can help your organization build investment plans that maximize capital efficiency and demonstrate tangible progress toward your financial and ESG goals.



For chemicals companies, innovation needs to focus not only on products, processes and services but also on smart choices about where to invest and how to use new tools and software in the most effective way.”

PWC'S 23RD ANNUAL GLOBAL CEO SURVEY
Chemicals Trends 2020: Winning Strategies for an Era of Sustainable Value Chains

Capital Planning for Chemical Companies



MAXIMIZE CAPITAL EFFICIENCY

Tangible, Measurable Results

Every Copperleaf client has recovered their investment within their first planning cycle—and every organization that has implemented our solution continues to use it successfully today. Results include:



Copperleaf (TSX:CPLF) provides enterprise decision analytics software solutions to companies managing critical infrastructure. We leverage operational and financial data to empower our clients to make investment decisions that deliver the highest business value. What sets us apart is our commitment to providing extraordinary experiences, shaped by people who care deeply, products that deliver exceptional value, and partnerships that stand the test of time. Copperleaf is a patron of The Institute of Asset Management and actively participates in shaping the future of asset management standards, including ISO 55000. Headquartered in Vancouver, Canada, our solutions are distributed and supported by regional staff and partners worldwide. Together, we are transforming how the world sees value.

www.copperleaf.com | 1.888.465.5323 | +1.604.639.9700 | 2920 Virtual Way, Suite 140, Vancouver, BC V5M 0C4 Canada

© 2022 Copperleaf Technologies Inc. COPPERLEAF, the COPPERLEAF logo, COPPERLEAF PORTFOLIO, COPPERLEAF ASSET, and COPPERLEAF VALUE are trademarks of Copperleaf Technologies Inc. COPPERLEAF is a registered trademark in Canada, the U.S., the E.U., and other countries. The COPPERLEAF logo is a registered trademark in Canada, the U.S., and the E.U. All rights reserved.